

MS MICHELANGELO



Built : 2000 (refurbished in 2006)

Length : 110 m long

Width : 11.40 m wide

Cabins : 78 cabins

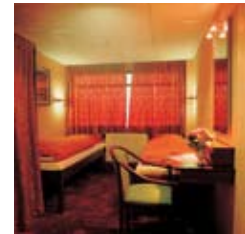
Passengers : 158 passengers

Equipments : all cabins are equipped with shower and toilet, hairdryer, satellite TV, radio, safe.

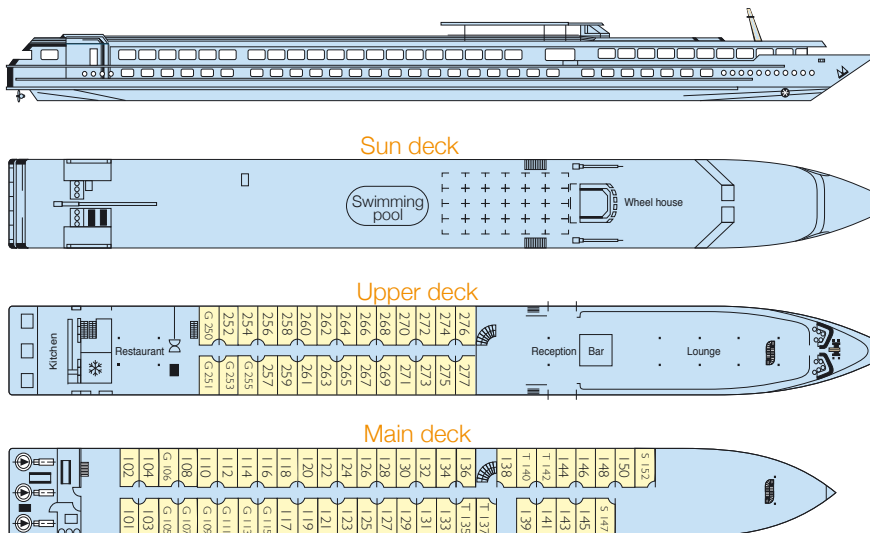
Central heating, 220V electricity, air-conditioning, radar, radiophone.

Facilities : lounge-bar with a dance floor - bar - dining room - large sundeck with deckchairs - swimming pool - gift shop.

MS Michelangelo sails on the Po and Venitian Lagoon.



2 deck ship

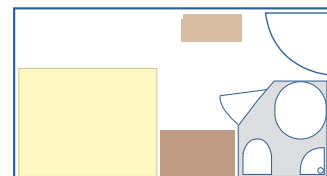


CABINS

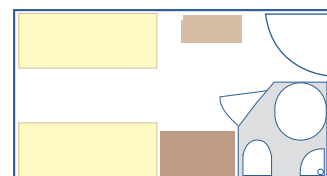
- Upper deck 28 cabins (4 double, 24 twins)
- Main deck 50 cabins (4 triple, 2 single, 7 double, 37 twins)

Cabin equipped for disabled : **NO**

- S = single cabins
- G = cabin with a double bed
- T = triple cabins



Cabin with a double bed



Cabin with 2 single beds

